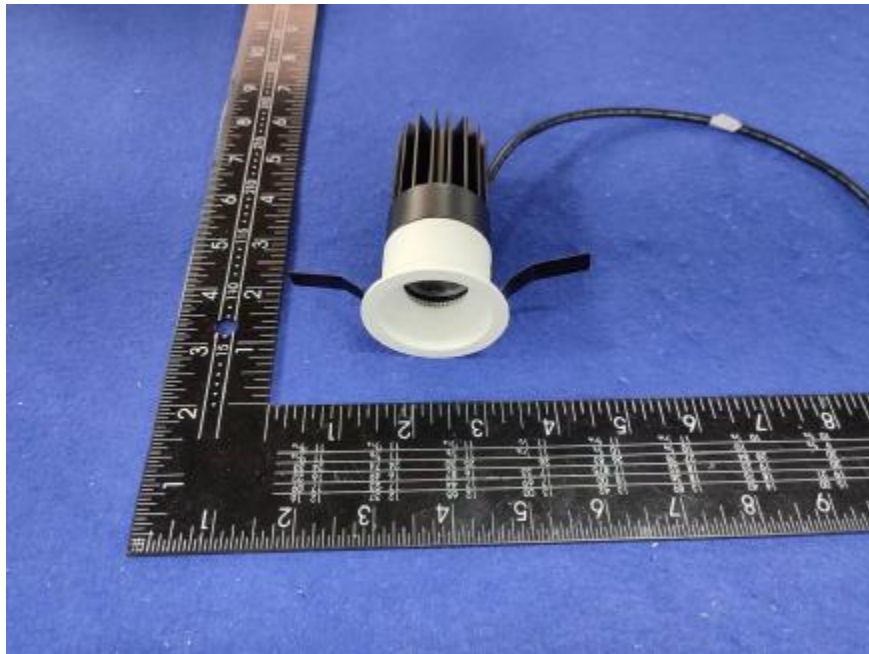


## Luminaire Photograph



Light Output Ratio:	43.4%	
Luminaire Power:	9.698 W	
SHR Nominal:	0.00	Calculated using the TM5
SHR Maximum:	0.20	fine grid method.

C Range: 0 - 360DEG  
C Interval: 30.0DEG  
Test Speed: HIGH  
Temperature: 25.3 °C  
Operators: zoe  
Test Date: 2023-12-6

γ Range: 0 - 180DEG  
γ Interval: 1.0DEG  
Test System: EVERFINE GO-SPEX500\_V1 SYSTEM V2.00.461  
Humidity: 65.0%  
Test Distance: 3.160m [K=1.0000]  
Remarks: LAMP: XHP35B-H-30G-B20-D0-U-03 Ra:90  
LENS: 10R  
NOT DRIVER: 12V 800mA  
30minutes warm-up

## LUMINOUS INTENSITY DISTRIBUTION DIAGRAM

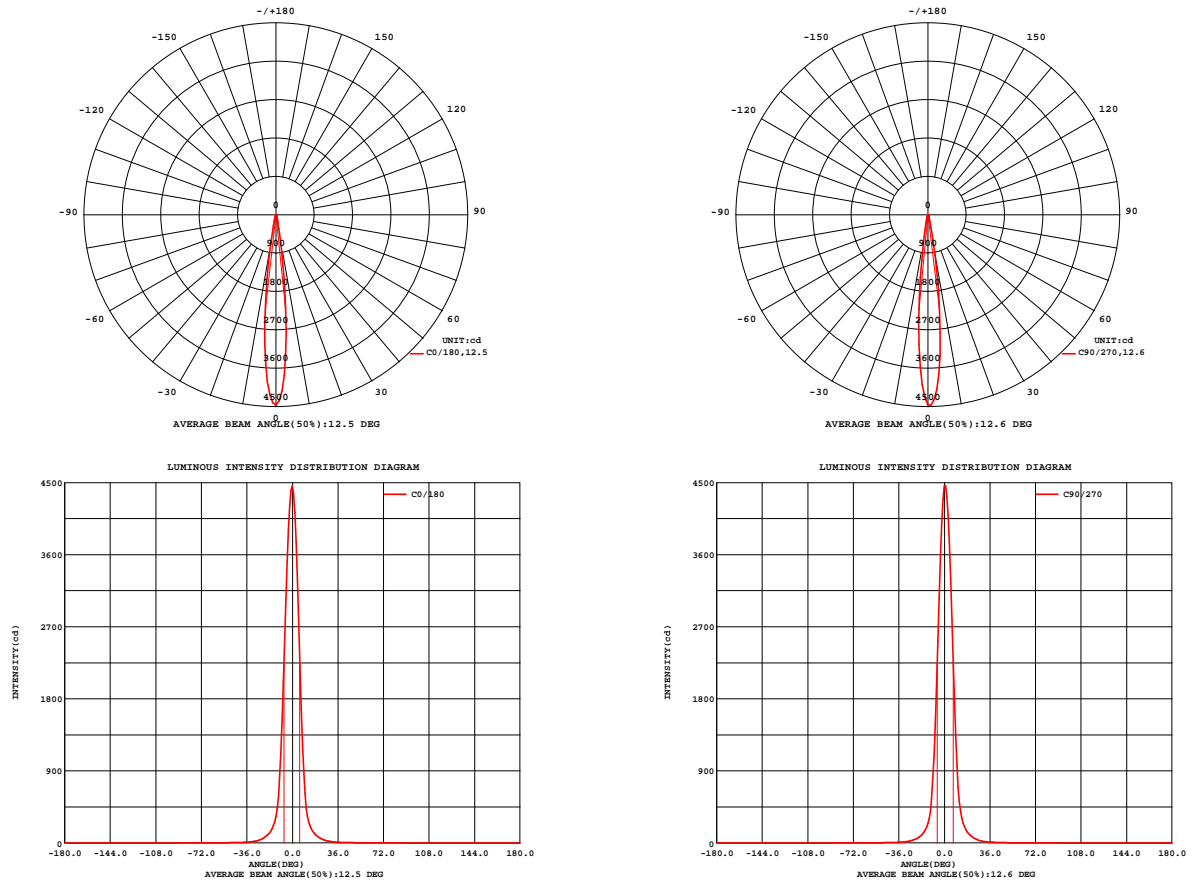


Fig. C0/C180

Fig. C90/C270

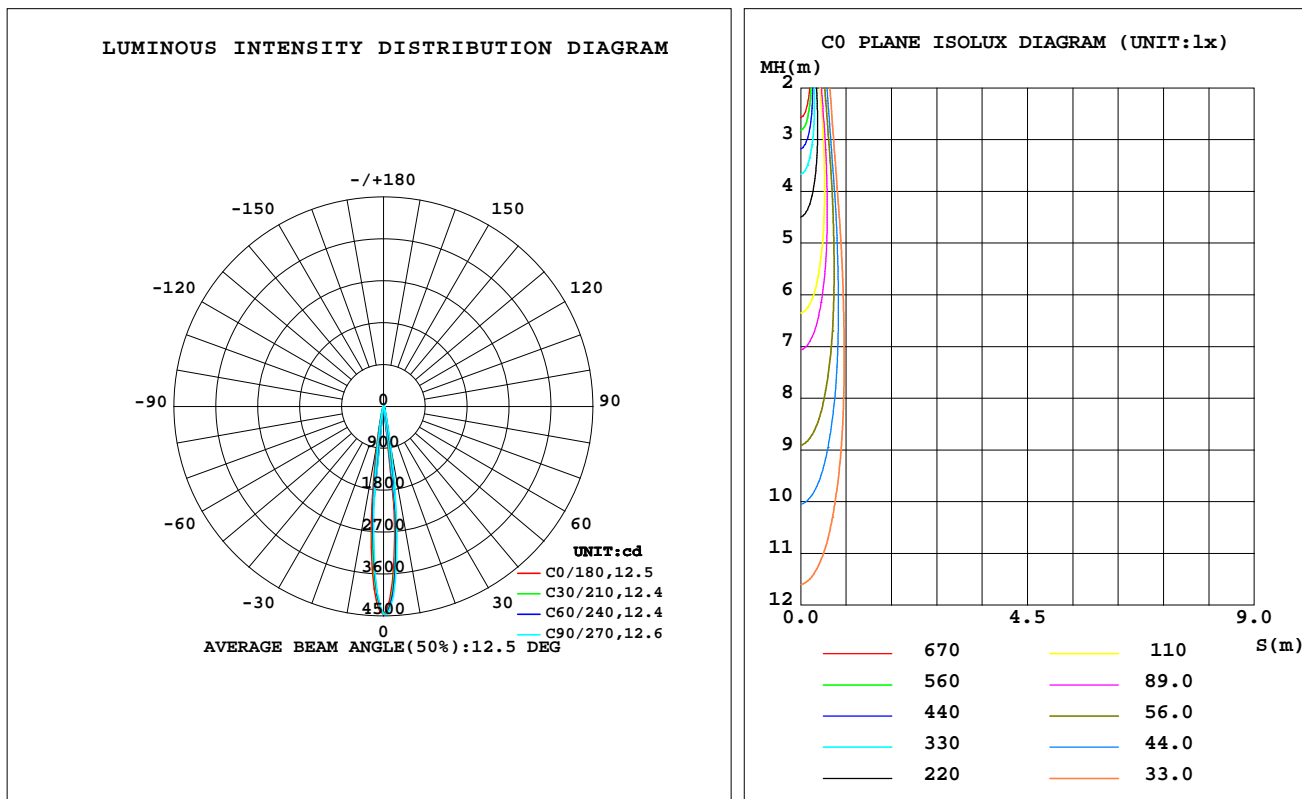
C Range: 0 - 360DEG  
C Interval: 30.0DEG  
Test Speed: HIGH  
Temperature: 25.3 °C  
Operators: zoe  
Test Date: 2023-12-6

$\gamma$  Range: 0 - 180DEG  
 $\gamma$  Interval: 1.0DEG  
Test System: EVERFINE GO-SPEX500\_V1 SYSTEM V2.00.461  
Humidity: 65.0%  
Test Distance: 3.160m [K=1.0000]  
Remarks: LAMP: XHP35B-H-30G-B20-D0-U-03 Ra: 90  
LENS: 10R  
NOT DRIVER: 12V 800mA  
30minutes warm-up

## LUMINAIRE PHOTOMETRIC TEST REPORT

Test:U:12.121V I:0.8001A P:9.6980W PF:1.0000 Freq:59.98Hz Lamp Flux:698.88x1 lm		
NAME: 2118.564-LEE-18	TYPE:	WEIGHT:
SPEC.: 3000K	DIM.:	SERIAL No.: 2312061425
MFR.: RISE	SUR.: 0.001256m2	Shielding Angle:

DATA OF LAMP		PHOTOMETRIC DATA Eff: 31.24 lm/W			
MODEL	CREE	I <sub>max</sub> (cd)	4463	S/MH(C0/180)	0.22
NOMINAL POWER(W)	10	LOR(%)	43.4	S/MH(C90/270)	0.19
RATED VOLTAGE(V)	12	TOTAL FLUX(lm)	302.97	η UP,DN(C0-180)	0.0,23.8
NOMINAL FLUX(lm)	698.88	CIE CLASS	DIRECT	η UP,DN(C180-360)	0.0,19.6
LAMPS INSIDE	1	η up(%)	0.0	CIBSE SHR NOM	0.00
TEST VOLTAGE(V)	12	η down(%)	43.4	CIBSE SHR MAX	0.20



C Range: 0 - 360DEG  
C Interval: 30.0DEG  
Test Speed: HIGH  
Temperature:25.3℃  
Operators:zoe  
Test Date:2023-12-6

γ Range: 0 - 180DEG  
γ Interval: 1.0DEG  
Test System:EVERFINE GO-SPEX500\_V1 SYSTEM V2.00.461  
Humidity:65.0%  
Test Distance:3.160m [K=1.0000]  
Remarks: LAMP:XHP35B-H-30G-B20-D0-U-03 Ra:90  
LENS:10R  
NOT DRIVER:12V 800mA  
30minutes warm-up

## ZONAL FLUX DIAGRAM

### ZONAL FLUX DIAGRAM:

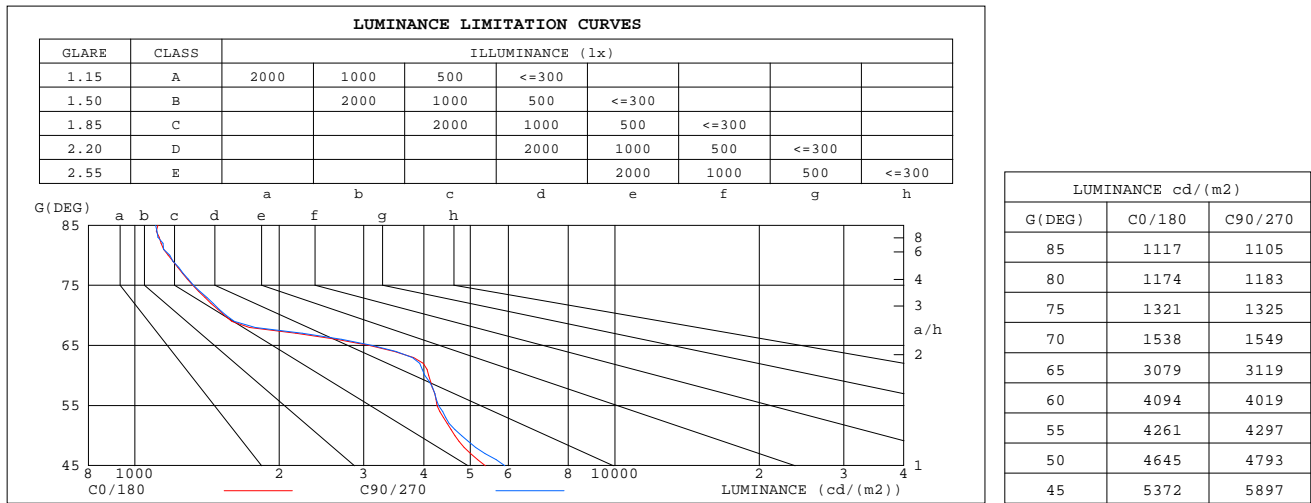
$\gamma$	C0	C45	C90	C135	C180	C225	C270	C315	$\gamma$	$\Phi$ zone	$\Phi$ total	%lum,lamp
10	612.8	814.1	954.7	974.5	802.9	620.0	544.1	548.0	0- 10	199.9	199.9	66,28.6
20	82.36	94.07	104.7	104.4	93.17	81.73	73.41	71.89	10- 20	66.81	266.7	88,38.2
30	18.32	20.96	22.57	23.84	20.62	19.19	17.23	17.84	20- 30	20.23	287.0	94.7,41.1
40	6.492	7.062	7.401	7.395	7.033	6.668	6.265	6.229	30- 40	7.208	294.2	97.1,42.1
50	3.763	3.865	3.868	3.828	3.832	3.709	3.587	3.604	40- 50	3.864	298.1	98.4,42.6
60	2.580	2.594	2.523	2.513	2.540	2.516	2.480	2.503	50- 60	2.756	300.8	99.3,43
70	0.6631	0.6642	0.6651	0.6648	0.6645	0.6521	0.6499	0.6458	60- 70	1.576	302.4	99.8,43.3
80	0.2569	0.2518	0.2578	0.2529	0.2550	0.2442	0.2470	0.2435	70- 80	0.4582	302.8	100,43.3
90	0	0	0	0	0	0	0	0	80- 90	0.1312	303.0	100,43.4
100	0	0	0	0	0	0	0	0	90-100	0	303.0	100,43.4
110	0	0	0	0	0	0	0	0	100-110	0	303.0	100,43.4
120	0	0	0	0	0	0	0	0	110-120	0	303.0	100,43.4
130	0	0	0	0	0	0	0	0	120-130	0	303.0	100,43.4
140	0	0	0	0	0	0	0	0	130-140	0	303.0	100,43.4
150	0	0	0	0	0	0	0	0	140-150	0	303.0	100,43.4
160	0	0	0	0	0	0	0	0	150-160	0	303.0	100,43.4
170	0	0	0	0	0	0	0	0	160-170	0	303.0	100,43.4
180	0	0	0	0	0	0	0	0	170-180	0	303.0	100,43.4
DEG	LUMINOUS INTENSITY:cd									UNIT:lm		

C Range: 0 - 360DEG  
C Interval: 30.0DEG  
Test Speed: HIGH  
Temperature:25.3℃  
Operators:zoe  
Test Date:2023-12-6

$\gamma$  Range: 0 - 180DEG  
 $\gamma$  Interval: 1.0DEG  
Test System:EVERFINE GO-SPEX500\_V1 SYSTEM V2.00.461  
Humidity:65.0%  
Test Distance:3.160m [K=1.0000]  
Remarks: LAMP:XHP35B-H-30G-B20-D0-U-03 Ra:90  
LENS:10R  
NOT DRIVER:12V 800mA  
30minutes warm-up

### LUMINANCE LIMITATION CURVES

Test:U:12.121V I:0.8001A P:9.6980W PF:1.0000 Freq:59.98Hz Lamp Flux:698.88x1 lm		
NAME: 2118.564-LEE-18	TYPE:	WEIGHT:
SPEC.: 3000K	DIM.:	SERIAL No.: 2312061425
MFR.: RISE	SUR.: 0.001256m2	Shielding Angle:



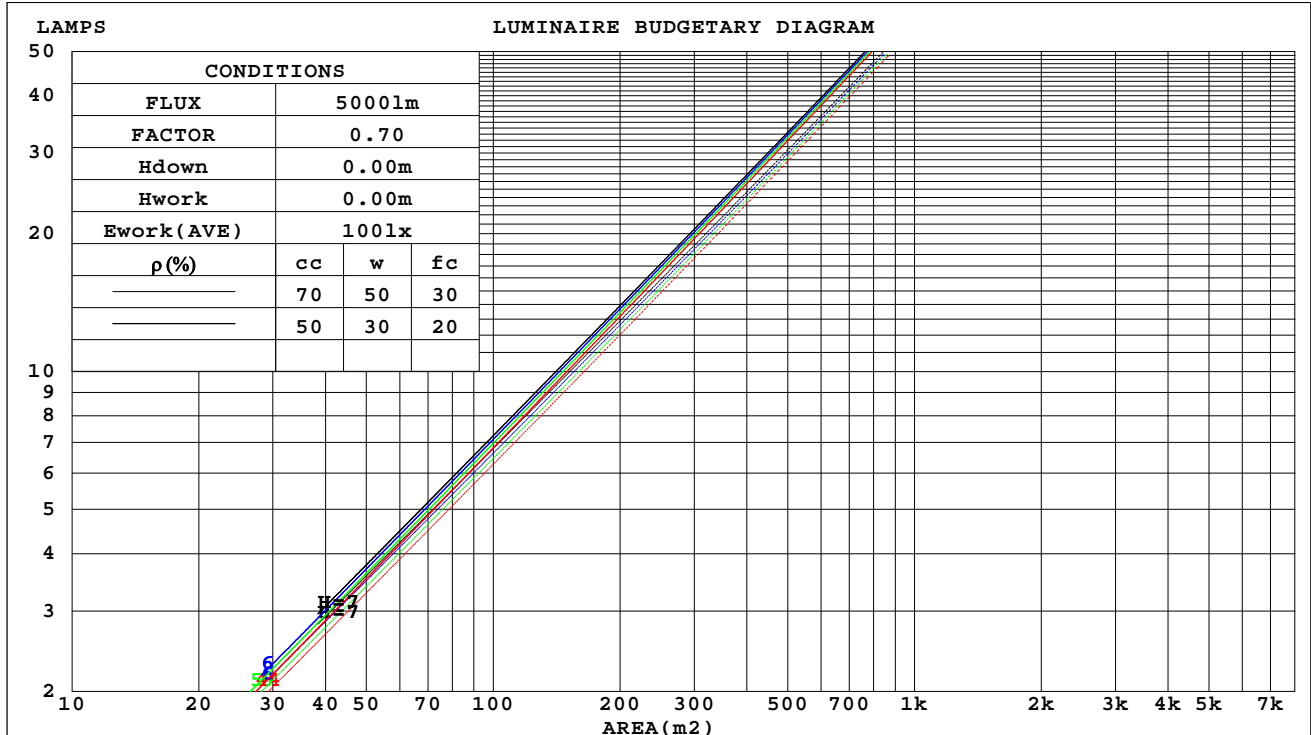
C Range: 0 - 360DEG  
C Interval: 30.0DEG  
Test Speed: HIGH  
Temperature:25.3℃  
Operators:zoe  
Test Date:2023-12-6

γ Range: 0 - 180DEG  
γ Interval: 1.0DEG  
Test System:EVERFINE GO-SPEX500\_V1 SYSTEM V2.00.461  
Humidity:65.0%  
Test Distance:3.160m [K=1.0000]  
Remarks: LAMP:XHP35B-H-30G-B20-D0-U-03 Ra:90  
LENS:10R  
NOT DRIVER:12V 800mA  
30minutes warm-up

## CU AND LUMINAIRE BUDGETARY ESTIMATE DIAGRAM

Test:U:12.121V I:0.8001A P:9.6980W PF:1.0000 Freq:59.98Hz Lamp Flux:698.88x1 lm		
NAME: 2118.564-LEE-18	TYPE:	WEIGHT:
SPEC.: 3000K	DIM.:	SERIAL No.: 2312061425
MFR.: RISE	SUR.: 0.001256m2	Shielding Angle:

pcc	80%			70%			50%			30%			10%			0
pw	50%	30%	10%	50%	30%	10%	50%	30%	10%	50%	30%	10%	50%	30%	10%	0
pfc	20%			20%			20%			20%			20%			0
RCR	RCR:Room Cavity Ratio						Coefficients of Utilization(CU)									
0.0	.52	.52	.52	.50	.50	.50	.48	.48	.48	.46	.46	.46	.44	.44	.44	.43
1.0	.49	.49	.48	.48	.48	.47	.47	.46	.46	.45	.45	.44	.44	.43	.43	.42
2.0	.47	.46	.45	.47	.46	.45	.45	.45	.44	.44	.44	.43	.43	.43	.42	.42
3.0	.46	.45	.43	.45	.44	.43	.44	.43	.42	.43	.43	.42	.42	.42	.41	.41
4.0	.45	.43	.42	.44	.43	.42	.43	.42	.41	.43	.42	.41	.42	.41	.40	.40
5.0	.43	.42	.41	.43	.42	.41	.42	.41	.40	.42	.41	.40	.41	.40	.40	.39
6.0	.42	.41	.40	.42	.41	.40	.42	.40	.40	.41	.40	.39	.41	.40	.39	.39
7.0	.42	.40	.39	.41	.40	.39	.41	.40	.39	.41	.39	.39	.40	.39	.39	.38
8.0	.41	.39	.38	.41	.39	.38	.40	.39	.38	.40	.39	.38	.40	.39	.38	.38
9.0	.40	.39	.38	.40	.39	.38	.40	.39	.38	.39	.38	.38	.39	.38	.38	.37
10.0	.40	.38	.37	.39	.38	.37	.39	.38	.37	.39	.38	.37	.39	.38	.37	.37



C Range: 0 - 360DEG  
C Interval: 30.0DEG  
Test Speed: HIGH  
Temperature:25.3℃  
Operators:zoe  
Test Date:2023-12-6

γ Range: 0 - 180DEG  
γ Interval: 1.0DEG  
Test System:EVERFINE GO-SPEX500\_V1 SYSTEM V2.00.461  
Humidity:65.0%  
Test Distance:3.160m [K=1.0000]  
Remarks: LAMP:XHP35B-H-30G-B20-D0-U-03 Ra:90  
LENS:10R  
NOT DRIVER:12V 800mA  
30minutes warm-up

### WEC AND CCEC

Test:U:12.121V I:0.8001A P:9.6980W PF:1.0000 Freq:59.98Hz Lamp Flux:698.88x1 lm		
NAME: 2118.564-LEE-18	TYPE:	WEIGHT:
SPEC.: 3000K	DIM.:	SERIAL No.: 2312061425
MFR.: RISE	SUR.: 0.001256m2	Shielding Angle:

pcc	80%			70%			50%			30%			10%			0
pw	50%	30%	10%	50%	30%	10%	50%	30%	10%	50%	30%	10%	50%	30%	10%	0
pfc	20%			20%			20%			20%			20%			0
RCR	RCR:Room Cavity Ratio						Wall Exitance Coefficients(WEC)									
0.0																
1.0	.052	.030	.009	.049	.028	.009	.044	.025	.008	.039	.022	.007	.034	.020	.006	
2.0	.047	.026	.008	.045	.025	.008	.041	.023	.007	.037	.021	.006	.033	.019	.006	
3.0	.044	.023	.007	.042	.022	.007	.038	.021	.006	.035	.019	.006	.032	.018	.005	
4.0	.040	.021	.006	.039	.020	.006	.036	.019	.006	.033	.018	.005	.030	.016	.005	
5.0	.037	.019	.005	.036	.018	.005	.033	.017	.005	.031	.016	.005	.029	.015	.005	
6.0	.035	.017	.005	.034	.017	.005	.031	.016	.005	.029	.015	.004	.028	.015	.004	
7.0	.033	.016	.005	.032	.016	.004	.030	.015	.004	.028	.014	.004	.026	.014	.004	
8.0	.031	.015	.004	.030	.015	.004	.028	.014	.004	.027	.014	.004	.025	.013	.004	
9.0	.029	.014	.004	.028	.014	.004	.027	.013	.004	.025	.013	.004	.024	.012	.004	
10.0	.027	.013	.004	.027	.013	.004	.026	.013	.004	.024	.012	.003	.023	.012	.003	

pcc	80%			70%			50%			30%			10%			0	
pw	50%	30%	10%	50%	30%	10%	50%	30%	10%	50%	30%	10%	50%	30%	10%	0	
pfc	20%			20%			20%			20%			20%			0	
RCR	RCR:Room Cavity Ratio						Ceiling Cavity Exitance Coefficients(CCEC)										
0.0	.083	.083	.083	.071	.071	.071	.048	.048	.048	.028	.028	.028	.009	.009	.009		
1.0	.072	.068	.065	.062	.059	.056	.042	.040	.039	.024	.023	.022	.008	.008	.007		
2.0	.064	.058	.052	.055	.050	.045	.038	.034	.031	.022	.020	.018	.007	.006	.006		
3.0	.057	.049	.043	.049	.042	.037	.034	.029	.026	.019	.017	.015	.006	.006	.005		
4.0	.051	.042	.035	.044	.037	.031	.030	.025	.022	.017	.015	.013	.006	.005	.004		
5.0	.046	.037	.030	.040	.032	.026	.027	.022	.018	.016	.013	.011	.005	.004	.004		
6.0	.042	.032	.025	.036	.028	.022	.025	.020	.016	.014	.012	.009	.005	.004	.003		
7.0	.038	.029	.022	.033	.025	.019	.023	.017	.013	.013	.010	.008	.004	.003	.003		
8.0	.035	.026	.019	.030	.022	.016	.021	.016	.012	.012	.009	.007	.004	.003	.002		
9.0	.033	.023	.016	.028	.020	.014	.019	.014	.010	.011	.008	.006	.004	.003	.002		
10.0	.030	.021	.014	.026	.018	.013	.018	.013	.009	.011	.008	.005	.003	.002	.002		

C Range: 0 - 360DEG  
C Interval: 30.0DEG  
Test Speed: HIGH  
Temperature:25.3℃  
Operators:zoe  
Test Date:2023-12-6

γ Range: 0 - 180DEG  
γ Interval: 1.0DEG  
Test System:EVERFINE GO-SPEX500\_V1 SYSTEM V2.00.461  
Humidity:65.0%  
Test Distance:3.160m [K=1.0000]  
Remarks: LAMP:XHP35B-H-30G-B20-D0-U-03 Ra:90  
LENS:10R  
NOT DRIVER:12V 800mA  
30minutes warm-up

## UGR(Unified Glare Rating) Table

Test:U:12.121V I:0.8001A P:9.6980W PF:1.0000 Freq:59.98Hz Lamp Flux:698.88x1 lm										
NAME: 2118.564-LEE-18					TYPE:			WEIGHT:		
SPEC.: 3000K					DIM.:			SERIAL No.: 2312061425		
MFR.: RISE					SUR.: 0.001256m2			Shielding Angle:		
ceiling/cavity	0.7	0.7	0.5	0.5	0.3	0.7	0.7	0.5	0.5	0.3
walls	0.5	0.3	0.5	0.3	0.3	0.5	0.3	0.5	0.3	0.3
working plane	0.2	0.2	0.2	0.2	0.2	0.2	0.2	0.2	0.2	0.2
Room dimensions	Viewed crosswise					Viewed endwise				
x = 2H y = 2H	10.2	10.7	10.4	10.9	11.0	10.4	10.9	10.6	11.1	11.2
3H	10.6	11.0	10.8	11.2	11.4	10.7	11.2	11.0	11.4	11.6
4H	10.6	11.1	10.9	11.3	11.5	10.8	11.3	11.0	11.5	11.7
6H	10.6	11.1	10.9	11.3	11.5	10.8	11.2	11.1	11.5	11.7
8H	10.6	11.1	10.9	11.3	11.6	10.8	11.2	11.1	11.5	11.7
12H	10.6	11.0	10.9	11.3	11.6	10.8	11.2	11.1	11.5	11.7
4H 2H	10.6	11.0	10.8	11.2	11.4	10.7	11.2	11.0	11.4	11.6
3H	10.9	11.3	11.2	11.6	11.8	11.1	11.5	11.4	11.7	12.0
4H	11.0	11.4	11.3	11.7	12.0	11.1	11.5	11.4	11.8	12.1
6H	11.0	11.4	11.4	11.7	12.0	11.2	11.5	11.5	11.8	12.2
8H	11.0	11.4	11.4	11.7	12.1	11.2	11.5	11.5	11.8	12.2
12H	11.0	11.3	11.4	11.7	12.1	11.2	11.5	11.6	11.8	12.2
8H 4H	10.9	11.2	11.3	11.6	11.9	11.1	11.4	11.4	11.7	12.1
6H	11.0	11.3	11.4	11.7	12.1	11.1	11.4	11.5	11.8	12.2
8H	11.0	11.3	11.5	11.7	12.1	11.2	11.4	11.6	11.8	12.2
12H	11.0	11.3	11.5	11.7	12.2	11.2	11.4	11.6	11.8	12.3
12H 4H	10.9	11.2	11.3	11.5	11.9	11.0	11.3	11.4	11.7	12.1
6H	11.0	11.2	11.4	11.6	12.1	11.1	11.3	11.5	11.7	12.2
8H	11.0	11.2	11.5	11.7	12.1	11.1	11.3	11.6	11.8	12.2
Variations with the observer position at spacings(CIE Pub.117):										
S = 1.0H	+ 0.7 / - 1.0					+ 0.8 / - 1.1				
1.5H	+ 0.7 / - 0.8					+ 1.3 / - 1.0				
2.0H	+ 0.4 / - 0.9					+ 0.7 / - 0.9				

CIE Pub.117, 698.9 lm Total Lamp Luminous Flux Correct (8log(F/F0) = -1.2)  
Area: 0.001256 m2

C Range: 0 - 360DEG  
C Interval: 30.0DEG  
Test Speed: HIGH  
Temperature:25.3℃  
Operators:zoe  
Test Date:2023-12-6

γ Range: 0 - 180DEG  
γ Interval: 1.0DEG  
Test System:EVERFINE GO-SPEX500\_V1 SYSTEM V2.00.461  
Humidity:65.0%  
Test Distance:3.160m [K=1.0000]  
Remarks: LAMP:XHP35B-H-30G-B20-D0-U-03 Ra:90  
LENS:10R  
NOT DRIVER:12V 800mA  
30minutes warm-up



### UTILIZATION FACTORS TABLE

Test:U:12.121V I:0.8001A P:9.6980W PF:1.0000 Freq:59.98Hz Lamp Flux:698.88x1 lm		
NAME: 2118.564-LEE-18	TYPE:	WEIGHT:
SPEC.: 3000K	DIM.:	SERIAL No.: 2312061425
MFR.: RISE	SUR.: 0.001256m2	Shielding Angle:

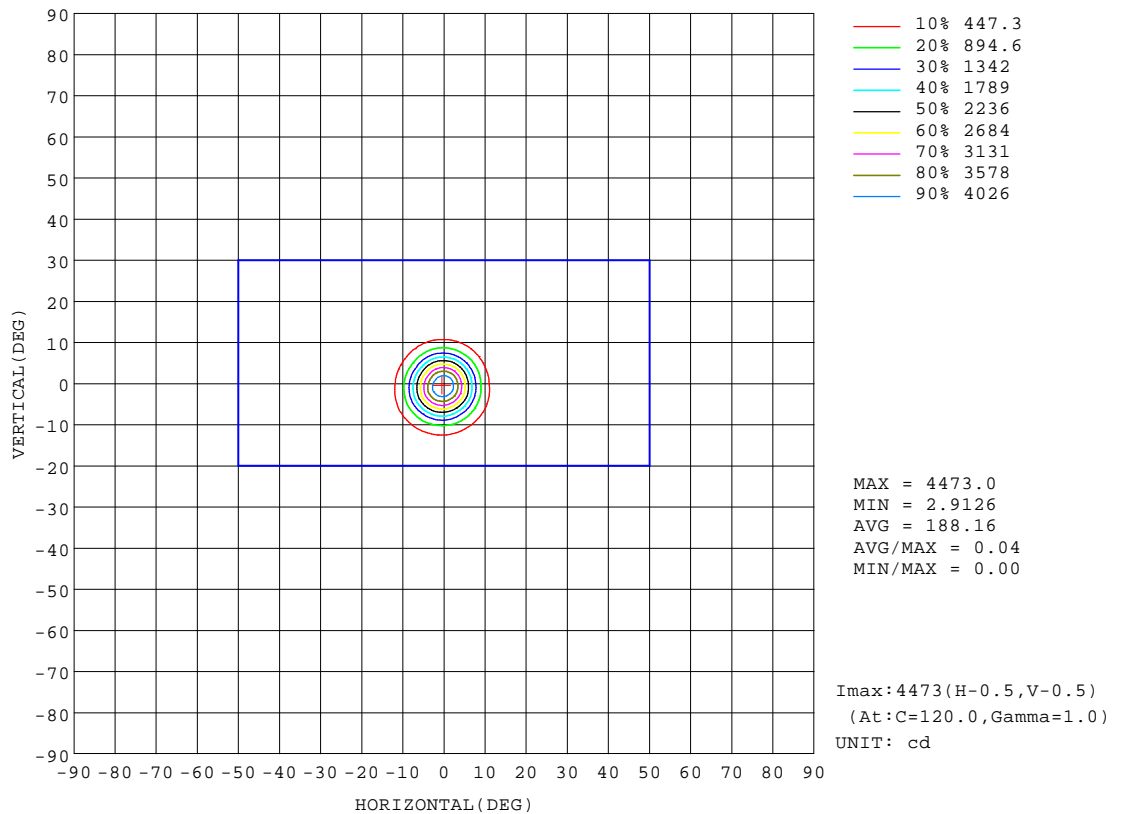
REFLECTANCE										
Ceiling	0.8	0.8	0.8	0.7	0.7	0.7	0.5	0.5	0.5	0
Walls	0.7	0.5	0.3	0.7	0.5	0.3	0.7	0.5	0.3	0
Working plane	0.2	0.2	0.2	0.2	0.2	0.2	0.2	0.2	0.2	0
ROOM INDEX	UTILIZATION FACTORS(PERCENT) $k(RI) \times RCR = 5$									
k = 0.60	39	36	35	39	36	35	38	36	35	33
0.80	42	40	38	42	39	38	41	39	38	36
1.00	44	41	40	43	41	40	43	41	40	38
1.25	45	43	42	45	43	42	44	42	41	40
1.50	46	44	43	46	44	43	45	44	42	41
2.00	47	46	44	47	45	44	46	44	43	41
2.50	48	47	45	47	46	45	46	45	44	42
3.00	49	47	46	48	47	46	46	46	45	42
4.00	50	48	48	49	48	47	47	46	46	43
5.00	50	49	48	49	48	48	47	47	46	43
ROOM INDEX	UF(total)									Direct
According to DIN EN 13032-2 2004			Suspended					SHRNOM = 1.25		

C Range: 0 - 360DEG  
C Interval: 30.0DEG  
Test Speed: HIGH  
Temperature:25.3℃  
Operators:zoe  
Test Date:2023-12-6

γ Range: 0 - 180DEG  
γ Interval: 1.0DEG  
Test System:EVERFINE GO-SPEX500\_V1 SYSTEM V2.00.461  
Humidity:65.0%  
Test Distance:3.160m [K=1.0000]  
Remarks: LAMP:XHP35B-H-30G-B20-D0-U-03 Ra:90  
LENS:10R  
NOT DRIVER:12V 800mA  
30minutes warm-up

## ISOCANDELA DIAGRAM

Test:U:12.121V I:0.8001A P:9.6980W PF:1.0000 Freq:59.98Hz Lamp Flux:698.88x1 lm		
NAME: 2118.564-LEE-18	TYPE:	WEIGHT:
SPEC.: 3000K	DIM.:	SERIAL No.: 2312061425
MFR.: RISE	SUR.: 0.001256m2	Shielding Angle:

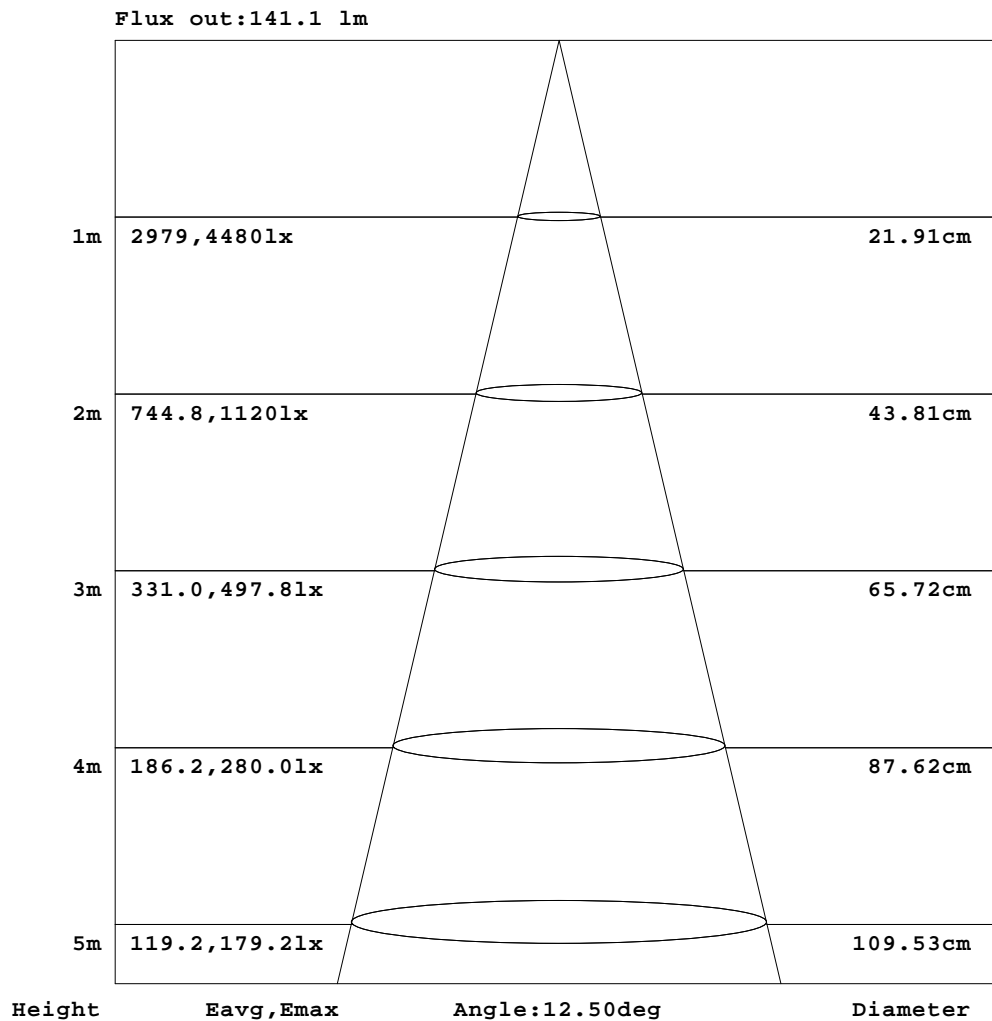


C Range: 0 - 360DEG  
C Interval: 30.0DEG  
Test Speed: HIGH  
Temperature: 25.3 °C  
Operators: zoe  
Test Date: 2023-12-6

γ Range: 0 - 180DEG  
γ Interval: 1.0DEG  
Test System: EVERFINE GO-SPEX500\_V1 SYSTEM V2.00.461  
Humidity: 65.0%  
Test Distance: 3.160m [K=1.0000]  
Remarks: LAMP: XHP35B-H-30G-B20-D0-U-03 Ra: 90  
LENS: 10R  
NOT DRIVER: 12V 800mA  
30minutes warm-up

### AAI Figure

Test:U:12.121V I:0.8001A P:9.6980W PF:1.0000 Freq:59.98Hz Lamp Flux:698.88x1 lm		
NAME: 2118.564-LEE-18	TYPE:	WEIGHT:
SPEC.: 3000K	DIM.:	SERIAL No.: 2312061425
MFR.: RISE	SUR.: 0.001256m2	Shielding Angle:



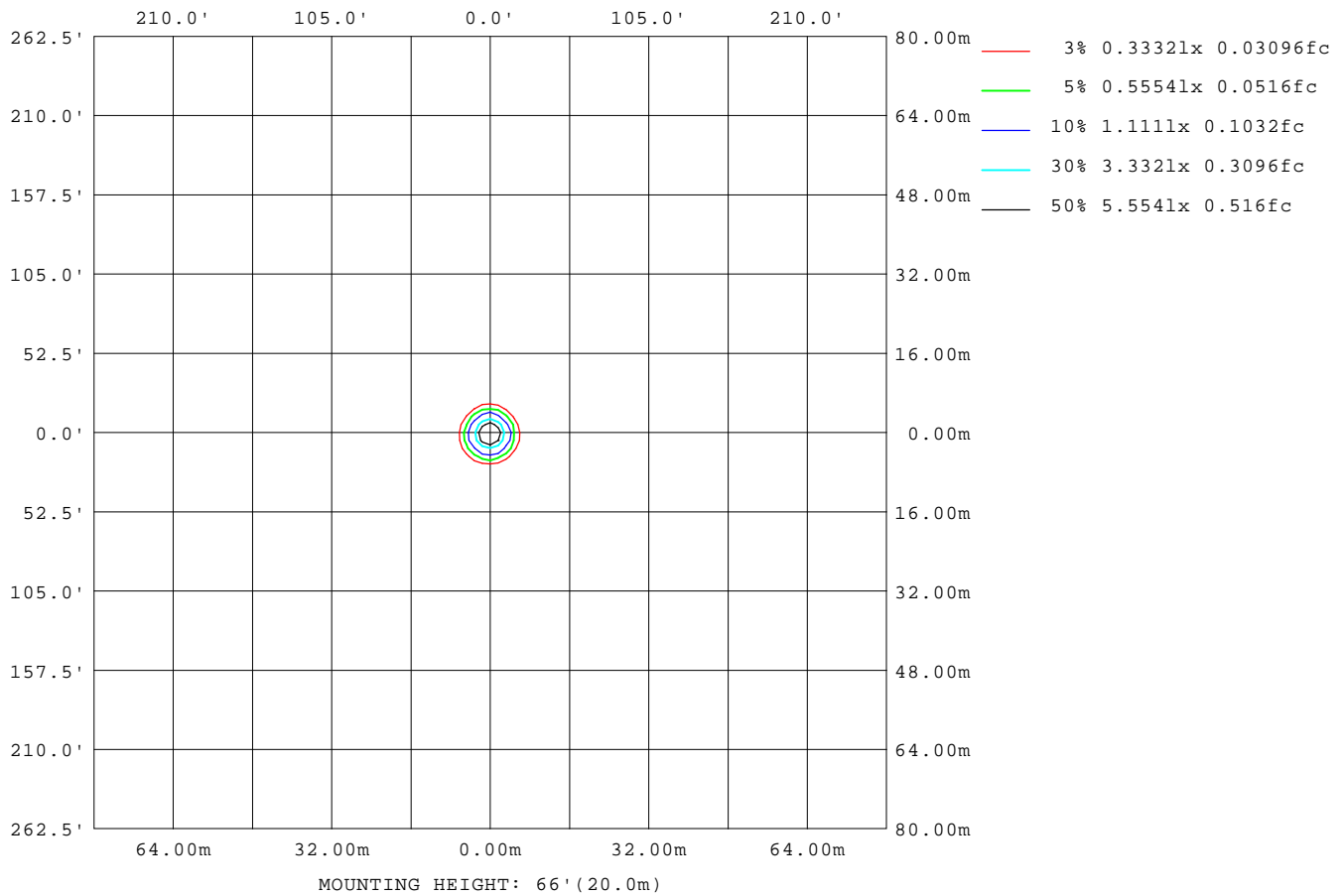
Note:The Curves indicate the illuminated area and the average illumination when the luminaire is at different distance.

C Range: 0 - 360DEG  
C Interval: 30.0DEG  
Test Speed: HIGH  
Temperature:25.3℃  
Operators:zoe  
Test Date:2023-12-6

γ Range: 0 - 180DEG  
γ Interval: 1.0DEG  
Test System:EVERFINE GO-SPEX500\_V1 SYSTEM V2.00.461  
Humidity:65.0%  
Test Distance:3.160m [K=1.0000]  
Remarks: LAMP:XHP35B-H-30G-B20-D0-U-03 Ra:90  
LENS:10R  
NOT DRIVER:12V 800mA  
30minutes warm-up

## ISOLUX DIAGRAM

Test:U:12.121V I:0.8001A P:9.6980W PF:1.0000 Freq:59.98Hz Lamp Flux:698.88x1 lm		
NAME: 2118.564-LEE-18	TYPE:	WEIGHT:
SPEC.: 3000K	DIM.:	SERIAL No.: 2312061425
MFR.: RISE	SUR.: 0.001256m2	Shielding Angle:



C Range: 0 - 360DEG  
C Interval: 30.0DEG  
Test Speed: HIGH  
Temperature:25.3℃  
Operators:zoe  
Test Date:2023-12-6

γ Range: 0 - 180DEG  
γ Interval: 1.0DEG  
Test System:EVERFINE GO-SPEX500\_V1 SYSTEM V2.00.461  
Humidity:65.0%  
Test Distance:3.160m [K=1.0000]  
Remarks: LAMP:XHP35B-H-30G-B20-D0-U-03 Ra:90  
LENS:10R  
NOT DRIVER:12V 800mA  
30minutes warm-up

## LED Avg.L Report

Test:U:12.121V I:0.8001A P:9.6980W PF:1.0000 Freq:59.98Hz Lamp Flux:698.88x1 lm		
NAME: 2118.564-LEE-18	TYPE:	WEIGHT:
SPEC.: 3000K	DIM.:	SERIAL No.: 2312061425
MFR.: RISE	SUR.: 0.001256m2	Shielding Angle:

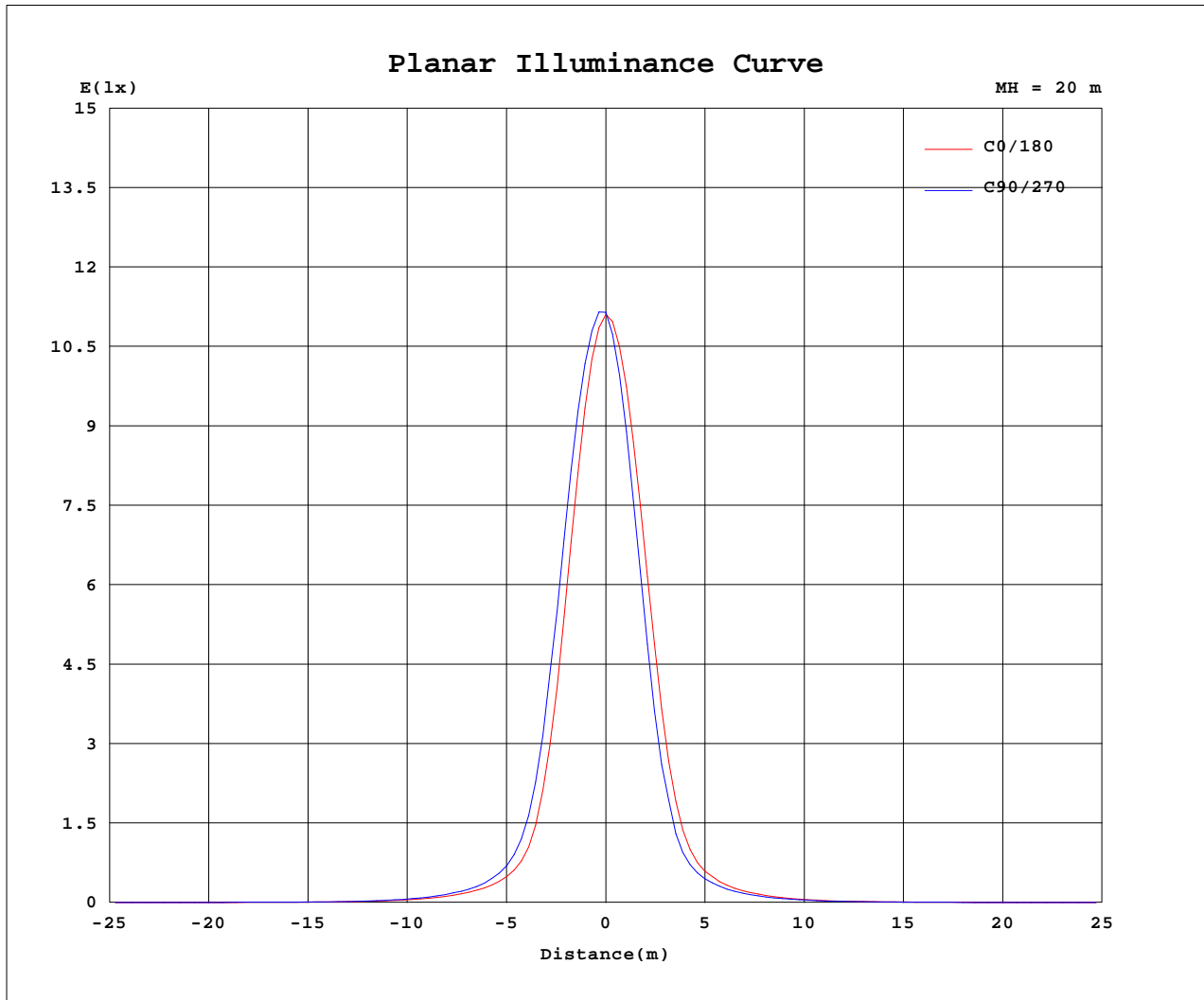
AvgL	cd/m2
L_0~180(65)av	3116
L_0~180(75)av	1321
L_0~180(85)av	1112
L_90~270(65)av	3047
L_90~270(75)av	1307
L_90~270(85)av	1067
L_45(65)av	3071
L_45(75)av	1301
L_45(85)av	1034

Standard: GB/T 29293-2012

C Range: 0 - 360DEG  
C Interval: 30.0DEG  
Test Speed: HIGH  
Temperature:25.3℃  
Operators:zoe  
Test Date:2023-12-6

γ Range: 0 - 180DEG  
γ Interval: 1.0DEG  
Test System:EVERFINE GO-SPEX500\_V1 SYSTEM V2.00.461  
Humidity:65.0%  
Test Distance:3.160m [K=1.0000]  
Remarks: LAMP:XHP35B-H-30G-B20-D0-U-03 Ra:90  
LENS:10R  
NOT DRIVER:12V 800mA  
30minutes warm-up

## Planar Illuminance Curve



C Range: 0 - 360DEG  
 C Interval: 30.0DEG  
 Test Speed: HIGH  
 Temperature: 25.3 °C  
 Operators: zoe  
 Test Date: 2023-12-6

γ Range: 0 - 180DEG  
 γ Interval: 1.0DEG  
 Test System: EVERFINE GO-SPEX500\_V1 SYSTEM V2.00.461  
 Humidity: 65.0%  
 Test Distance: 3.160m [K=1.0000]  
 Remarks: LAMP: XHP35B-H-30G-B20-D0-U-03 Ra:90  
 LENS: 10R  
 NOT DRIVER: 12V 800mA  
 30minutes warm-up

## LUMINOUS DISTRIBUTION INTENSITY DATA

Test:U:12.121V I:0.8001A P:9.6980W PF:1.0000 Freq:59.98Hz Lamp Flux:698.88x1 lm		
NAME: 2118.564-LEE-18	TYPE:	WEIGHT:
SPEC.: 3000K	DIM.:	SERIAL No.: 2312061425
MFR.: RISE	SUR.: 0.001256m2	Shielding Angle:

Table--1

UNIT: cd

C(DEG) γ (DEG)	0	30	60	90	120	150	180	210	240	270	300	330						
0	4458	4458	4458	4458	4458	4458	4458	4458	4458	4458	4458	4458						
5	2762	2991	3147	3301	3365	3295	3040	2762	2629	2522	2518	2593						
10	613	748	880	955	991	958	803	645	595	544	546	550						
15	181	211	225	247	255	248	221	189	178	166	163	164						
20	82.4	90.8	97.3	105	105	104	93.2	84.7	78.8	73.4	71.2	72.6						
25	37.7	42.1	44.6	48.3	50.4	48.7	43.1	39.8	37.1	34.6	35.3	35.8						
30	18.3	20.4	21.5	22.6	24.2	23.4	20.6	19.8	18.5	17.2	18.0	17.7						
35	10.1	10.9	11.4	11.9	12.5	12.0	11.2	10.9	10.2	9.85	9.60	9.73						
40	6.49	6.99	7.13	7.40	7.50	7.29	7.03	6.85	6.49	6.27	6.18	6.28						
45	4.79	5.03	5.17	5.24	5.26	5.15	5.01	4.95	4.79	4.62	4.65	4.70						
50	3.76	3.85	3.88	3.87	3.82	3.83	3.83	3.75	3.66	3.59	3.58	3.63						
55	3.08	3.15	3.13	3.09	3.06	3.03	3.08	3.04	2.98	2.95	2.94	3.00						
60	2.58	2.61	2.58	2.52	2.50	2.52	2.54	2.53	2.50	2.48	2.49	2.52						
65	1.64	1.68	1.66	1.65	1.64	1.67	1.67	1.63	1.62	1.58	1.57	1.57						
70	0.66	0.66	0.66	0.67	0.67	0.66	0.66	0.65	0.65	0.65	0.64	0.65						
75	0.43	0.43	0.43	0.43	0.43	0.43	0.43	0.42	0.42	0.42	0.41	0.42						
80	0.26	0.25	0.25	0.26	0.25	0.25	0.26	0.24	0.24	0.25	0.24	0.24						
85	0.12	0.12	0.12	0.12	0.12	0.12	0.12	0.11	0.11	0.11	0.11	0.11						
90	0.00	0.00	0.00	0.00	0.00	0.00	0.00	0.00	0.00	0.00	0.00	0.00						
95	0.00	0.00	0.00	0.00	0.00	0.00	0.00	0.00	0.00	0.00	0.00	0.00						
100	0.00	0.00	0.00	0.00	0.00	0.00	0.00	0.00	0.00	0.00	0.00	0.00						
105	0.00	0.00	0.00	0.00	0.00	0.00	0.00	0.00	0.00	0.00	0.00	0.00						
110	0.00	0.00	0.00	0.00	0.00	0.00	0.00	0.00	0.00	0.00	0.00	0.00						
115	0.00	0.00	0.00	0.00	0.00	0.00	0.00	0.00	0.00	0.00	0.00	0.00						
120	0.00	0.00	0.00	0.00	0.00	0.00	0.00	0.00	0.00	0.00	0.00	0.00						
125	0.00	0.00	0.00	0.00	0.00	0.00	0.00	0.00	0.00	0.00	0.00	0.00						
130	0.00	0.00	0.00	0.00	0.00	0.00	0.00	0.00	0.00	0.00	0.00	0.00						
135	0.00	0.00	0.00	0.00	0.00	0.00	0.00	0.00	0.00	0.00	0.00	0.00						
140	0.00	0.00	0.00	0.00	0.00	0.00	0.00	0.00	0.00	0.00	0.00	0.00						
145	0.00	0.00	0.00	0.00	0.00	0.00	0.00	0.00	0.00	0.00	0.00	0.00						
150	0.00	0.00	0.00	0.00	0.00	0.00	0.00	0.00	0.00	0.00	0.00	0.00						
155	0.00	0.00	0.00	0.00	0.00	0.00	0.00	0.00	0.00	0.00	0.00	0.00						
160	0.00	0.00	0.00	0.00	0.00	0.00	0.00	0.00	0.00	0.00	0.00	0.00						
165	0.00	0.00	0.00	0.00	0.00	0.00	0.00	0.00	0.00	0.00	0.00	0.00						
170	0.00	0.00	0.00	0.00	0.00	0.00	0.00	0.00	0.00	0.00	0.00	0.00						
175	0.00	0.00	0.00	0.00	0.00	0.00	0.00	0.00	0.00	0.00	0.00	0.00						
180	0.00	0.00	0.00	0.00	0.00	0.00	0.00	0.00	0.00	0.00	0.00	0.00						

C Range: 0 - 360DEG  
C Interval: 30.0DEG  
Test Speed: HIGH  
Temperature:25.3℃  
Operators:zoe  
Test Date:2023-12-6

γ Range: 0 - 180DEG  
γ Interval: 1.0DEG  
Test System:EVERFINE GO-SPEX500\_V1 SYSTEM V2.00.461  
Humidity:65.0%  
Test Distance:3.160m [K=1.0000]  
Remarks: LAMP:XHP35B-H-30G-B20-D0-U-03 Ra:90  
LENS:10R  
NOT DRIVER:12V 800mA  
30minutes warm-up